

Capitol Complex Exterior Memorial and Sculpture Inventory #1

Montana State Capitol Complex
November, 2010



Prepared by
*Montana Fish, Wildlife and Parks
Design and Construction Bureau*

Updated by Montana Historical Society 10/2010

About this Document

This inventory is one in a three-part series of catalogs designed to document the public art and monuments in the Montana State Capitol Complex in Helena. The three inventories are:

- *Capitol Complex Exterior Memorial and Sculpture Inventory* (Montana Fish Wildlife and Parks) (Updated by Montana Historical Society 10/2010)
- *Inventory of Public Art Located Inside the Montana State Capitol* (Montana Historical Society)
- *Inventory of Public Art Located Inside the Other Buildings of the Montana State Capitol Complex* (Montana Historical Society)

These three documents were prepared in 2004 for the Capitol Complex Advisory Committee as part of its ongoing efforts to develop and maintain an “Art and Memorial Plan” for the state capitol and the capitol complex.

For more information, refer to:

Section 2-17-803, MCA: “An act to generally revise the provisions of law relating to the capitol complex advisory council; to direct the council to establish an art and memorial plan to control the placement of art and memorials in the capitol complex buildings and on the capitol complex grounds; to authorize the department of administration to approve temporary displays in the capitol complex buildings or grounds; and to change the agency responsible for maintaining an inventory of art and memorials in the capitol complex; amending sections 2-17-804, 2-17-805, 2-17-807, and 2-17-812 MCA.

Or call:

406-444-3315 – Department of Administration
406-444-4711 – Montana Historical Society

Existing Memorials and Sculptures

Montana State Capitol Complex, Helena 2004

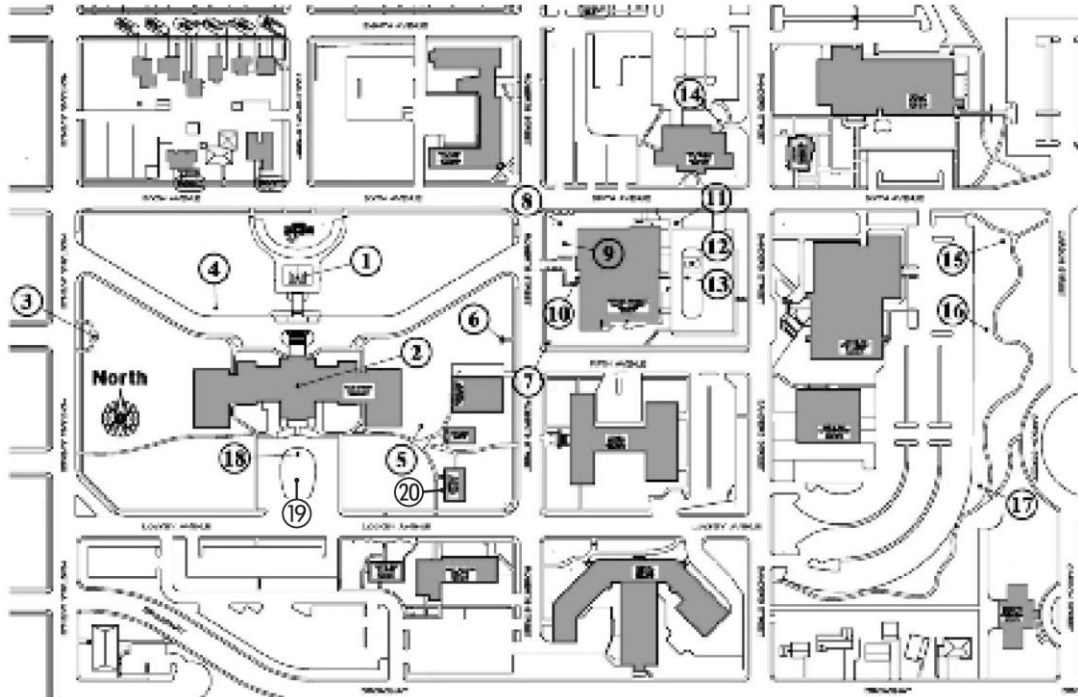
1. **Thomas Francis Meagher Statue**: 16' high bronze on a granite base, located on the north side of Capitol lawn, front and center.
2. **Montana**: The statue atop the Capitol Dome is made of copper and iron, and is 144" high. It was installed by early December 1900.
3. **Montana Highway Patrol Memorial**: 5' high x 6' wide black granite monument with flagpole and flanked by two 44" high x 27" wide white granite monuments. Monuments stand at the east side of a 16' x 24' plaza paved with engraved bricks and flanked by two granite benches. Located at the west side of the Capitol building adjacent to the sidewalk on Montana Avenue. Installed in 1997.
4. **President George Bush Elm Tree**: 30' High Elm Tree with a 20" x 15" bronze plaque on a 3' steel post, located north of the Capitol on the east end of the semi-circular parking area. Planted 1989.
5. **Prisoners of War and Missing in Action Freedom Tree**: 24" x 20" bronze plaque on a concrete base, located at the southeast corner of the Capitol building. Planted 1973.
6. **Ten Commandments**: 5' high red granite monument located on the east side of the Capitol lawn near sidewalk. Installed by Montana State Aerie Fraternal Order of Eagles, September 1956.
7. **Liberty Bell Replica**: 9' high bronze bell located adjacent to the sidewalk on the southwest corner of the Historical Society building lawn. Installed by the Copper Producers of America in 1950.
8. **Montana National Guard Spruce Tree**: 50' Spruce Tree located near the northwest corner of the Historical Society building. The 24" x 12" dedication plaque is on a concrete base adjacent to the sidewalk west of the tree on Roberts Avenue. Installed by the 163rd Infantry Association in 1970.
9. **Herd Bull Sculpture**: 10' High x 20' square weathered steel sculpture near the northeast corner of the Historical Society Building. Marked by a painted steel plaque on a 3' high steel post adjacent to the sidewalk on Roberts Avenue directly west of the statue. Created by Benji Daniels. Installed in 1994.
10. **Veterans and Pioneers Memorial Building – Landscape Beautification Project**: 2' high granite monument located south of the main west entrance to the Historical Society Building. Installed in 1992.

11. **“Symbol of the Pros” – Rodeo Cowboy Statue:** 24’ bronze professional rodeo cowboy statue with a 16” x 16” dedication plaque embedded in a stone retaining wall. Located at the northeast corner of the Historical Society Building. A part of the Bob Scriver collection, donated by Lorraine Scriver. Installed in July 2000.
12. **200th Anniversary for Montana Veterans:** Four flagpoles, a 6’ high concrete monument and a 3’ high granite marker. Located on the north end of the parking island in the rear parking lot east of the Historical Society Building. Installed by the American Legion and Auxiliary in 1976.
13. **Arrastra:** The arrastra measures approximately 24” high by 47” wide by 64” long. Donated by the Helena Kiwanis Club in 1937. It was displayed on the south lawn of the Capitol before being moved to its present location in the rear parking lot east of the Historical Society Building in 1968.
14. **Eagle:** 7’ high steel flying eagle sculpture on a steel post. Located outside the north entrance of the Fish, Wildlife and Parks Headquarters Building. Created by Alan Richter. Installed in 1976.
15. **Pearl Harbor Memorial:** 3’ high granite stone located at the north end of the Capitol Park. Installed in 1995 by the Pearl Harbor Survivors Association, Montana Big Sky Chapter in 1995.
16. **Lewis and Clark Golden Willow:** 20’ high Cottonwood with a 12” square etched aluminum plaque on a 3’ steel post adjacent to the sidewalk in Capitol Park. Planted in 1989.
17. **Peace Pole:** This pole is located in the Capitol Park area, below the Executive Residence. No historical information of its installation is available.
18. **Montana Centennial Square:** A 14’ x 16’ plaza at the oval near the south entrance to the Capitol Building constructed of 24” x 24” granite pavers at the perimeter and 4” x 8” terra cotta colored, inscribed bricks in the center. Established by the Montana Capitol Restoration Foundation, the square is a fund raising opportunity as blank bricks are replaced with bricks inscribed as directed by donors to the Foundation. Dedicated in July of 2002.
19. **Donald Nutter Memorial Plaque:** Donald Nutter Memorial Plaque: 26.25” high x 45.0” wide x 12.5” deep (base) x 2.0” deep (top) granite monument with attached bronze plaque memorializing Governor Donald G. Nutter and Dennis B. Gordon Exec. Secy. to the Governor, Edward C. Wren Commissioner of Agriculture, Maj. Clifford Hanson, Capt. Joseph Devine, M Sgt. Charles W. Ballard - Members of Montana Air Nation Guard who died in an airplane crash January 25, 1962 Wolf Creek Canyon while in service of Montana. The monument is flanked by two granite benches, 20.5” high x 56.0” long x 16.25” deep, positioned on the south side of the Capitol building. This plaque was

originally installed inside the Capitol building outside the Governor's office and was removed at some point. It was installed in its present location and rededicated in 2006.

20. **Original Headquarters, Highway Patrol Plaque:** 24.0" wide x 20.125" long metal plaque attached to the west side of the Capitol Annex building. The plaque bears the text: "Original Headquarters / Montana Highway Patrol / The Montana Highway Patrol was created by an act / of the state legislature and signed into law by / Governor Frank Cooney on 14 March, 1935. This / building served as the original headquarters from / 1935 until the early 1950s. / Governor Frank Cooney / Supervisor Lou Boedecker / State Highway Commission Members: / L. J. Croonenberg / Harry McGregor / Rockwood Brown / This marker provided by Colonel Paul K. Grimstad and employees of the / Montana Highway Patrol."

21. Map of Existing Memorials and Sculptures
Montana State Capitol Complex, Helena 2004



Capitol Tree Dedication Program

- A listing of Memorial trees planted as part of the Capitol Tree Dedication Program is included as Appendix A. Each tree has a 3” x 5” plaque at its base indicating botanical and common names as well as dedicatory information.

1.

Thomas Francis Meagher Statue: 16' high bronze on a granite base, located on the north side of Capitol lawn, front and center. Thomas Francis Meagher (1823-1867) was an Irish revolutionary, a Union general in the American Civil War, and twice an acting governor of Montana Territory. Always a colorful and controversial figure, the cause of Meagher's death—murder or accident—remains a mystery. The statue was sculpted by Charles J. Mulligan (1866-1916), an Irish-born Chicago artist. It was dedicated on the capitol's north lawn on July 4, 1905.



THOMAS FRANCIS MEAGHER.
 AMERICAN SOLDIER AND STATESMAN, BRIGADIER GENERAL UNITED STATES ARMY,
 RAISED AND ORGANIZED THE IRISH BRIGADE IN THE ARMY OF THE POTOMAC, AND
 PERSONALLY COMMANDERED IT IN THE BATTLES OF FAIR OAKS, MECHANICSVILLE, GAIRES' MILL,
 WHITE OAKS, SWAMPY ALVERN HILL, FREDERICKSBURG, ANTETAM, AND CHANDLLORSVILLE,
 APPOINTED TO THE COMMAND OF THE ETOWAH DISTRICT AS ACTING MAJOR GENERAL IN
 JULY 1867, ACTING GOVERNOR OF MONTANA FROM SEPTEMBER 1865 TO JULY 1, 1867,
 DIED HE WAS DROWNED IN THE MISSOURI RIVER AT FORT BENSON, MONTANA.

THOMAS FRANCIS MEAGHER.
 IRISH PATRIOT AND ORATOR, BORN IN THE CITY OF WATERFORD IRELAND, AUGUST 3,
 1823, SENT TO PARIS IN 1848 BY THE IRISH CONFEDERATION AND THE CITIZENS OF DUBLIN TO
 PRESENT AN ADDRESS OF CONGRATULATION TO THE FRENCH PEOPLE ON THE ESTABLISHMENT
 OF THE REPUBLIC, INDICTED AND TRIED AT CONNELL, IRELAND, SEPTEMBER 1848, FOR ACTIVE
 PARTICIPATION IN THE IRISH INSURRECTIONARY MOVEMENT AGAINST ENGLISH RULE AND
 SENTENCED TO BE HANGED, DRAWN AND QUARTERED, SENTENCE COMMUTED TO TRANSPORTATION
 FOR LIFE TO THE CONVICT COLONY OF VAN DIEMAN'S LAND.

ERECTED TO THE MEMORY
 OF
THOMAS FRANCIS MEAGHER
 BY HIS
 FRIENDS AND ADMIRERS IN AMERICA

TO THE END, I SEE THE PATH I HAVE BEEN
 OBTAINED TO WALK, AND UPON THE GRAVE WHICH CLOSES
 IN THAT PATH, I CAN READ NO COWARD'S EPIGRAM
 FROM SPEECH ON THE TRANSPORTATION
 OF MITCHELL, 1848.
 IN IRELAND, IN AMERICA, HE INVITED NO MAN TO
 DANGER HE WAS NOT READY TO SHARE, NEVER FORGOT
 THIS HE GAVE ALL, LOST ALL FOR THE LAND OF HIS BIRTH,
 HE RISKED ALL FOR THE LAND OF HIS ADOPTION, WAS HER TRUE
 AND LOYAL SOLDIER, AND IN THE END DIED IN HER SERVICE.

2.

Montana: The figure that crowns the Capitol dome is a personification of liberty armed with a torch and shield to light the way and protect the populace. The statue is made of copper and iron, and is 144” high. It was placed atop the capitol dome since early December 1900. The statue was ordered by the state’s first capital commission, which was disbanded in 1897 amidst allegations of corruption and fraud. Since the original commission destroyed all of its records when the scandal erupted, little was known about *Montana’s* origins until 2006 when MHS was contacted by the artist's granddaughter, Alice Nagle, who was able to supply documentation on her grandfather and his role as the creator of this piece. Now Edward Van Landeghem (1865-1955), Belgian born artist who immigrated to the United States in 1899, settling in Pennsylvania can receive credit for sculpting this beautiful piece.



3.

Montana Highway Patrol Memorial: 5' high x 6' wide black granite monument with flagpole and flanked by two 44" high x 27" wide white granite monuments. Monuments stand at the east side of a 16' x 24' plaza paved with engraved bricks and flanked by two granite benches. Located at the west side of the Capitol building adjacent to the sidewalk on Montana Avenue. Installed in 1997.





4.

President George Bush Elm Tree: 30' High Elm Tree with a 20" x 15" bronze plaque on a 3' steel post, located north of the Capitol on the east end of the semi-circular parking area. Planted 1989.



5.

Prisoners of War and Missing in Action Freedom Tree: 24" x 20" bronze plaque on a concrete base, located at the southeast corner of the Capitol building. Planted 1973.



6.

Ten Commandments: 5' high red granite monument located on the east side of the Capitol lawn near sidewalk. Installed by Montana State Aerie Fraternal Order of Eagles, September 1956. The idea for placing granite tablets, sometimes referred to as “Decalogues,” in prominent public places originated with Cecil B. DeMille, director of the 1956 Hollywood epic, *The Ten Commandments*. DeMille proposed the idea to E. J. Ruegemer, a Minnesota judge and member of the Fraternal Order of Eagles (FOE). The FOE adopted the project and over the next several years placed hundreds (some sources say thousands) of the tablets around the country. The Decalogue on the capitol lawn was presented by the Montana State Aerie, Fraternal Order of Eagles in 1956.



7.

Liberty Bell Replica: 9' high bronze bell located adjacent to the sidewalk on the southwest corner of the Historical Society building lawn. Installed by the Copper Producers of America in 1950. This replica—a “full-sized, exact duplicate”—of the Liberty Bell was given to the state in 1950. It was one of 52 such bells that toured the U.S. from May 15 to July 4 of that year as part of a campaign promoting a savings bond drive organized around the theme, “Save Your Independence.” The bells were paid for through contributions made by America’s copper producers, including the Anaconda Copper Mining (ACM) Company. Montana’s bell toured various Treasure State cities on a flatbed truck before being placed on the capitol grounds.



8.

Montana National Guard Spruce Tree: 50' Spruce Tree located near the northwest corner of the Historical Society building. The 24" x 12" dedication plaque is on a concrete base adjacent to the sidewalk west of the tree on Roberts Avenue. Installed by the 163rd Infantry Association in 1970.



9.

Herd Bull Sculpture: 10' High x 20' square weathered steel sculpture near the northeast corner of the Historical Society Building. Marked by a painted steel plaque on a 3' high steel post adjacent to the sidewalk on Roberts Avenue directly west of the statue. *Herd Bull* is the work of Sioux artist Benji Daniels and Billings sculptor James J. Hadcock. The two-and-a-half ton bison skull was welded of recycled sheet metal and measures 24 feet wide by seven feet high. Completed in 1990, *Herd Bull* was placed on the Society lawn in 1994 to symbolize the life-ways of Montana's first inhabitants, the spirit of the West for those who followed, and the impact of nature on all who have called Montana home.



10.

Veterans and Pioneers Memorial Building – Landscape Beautification

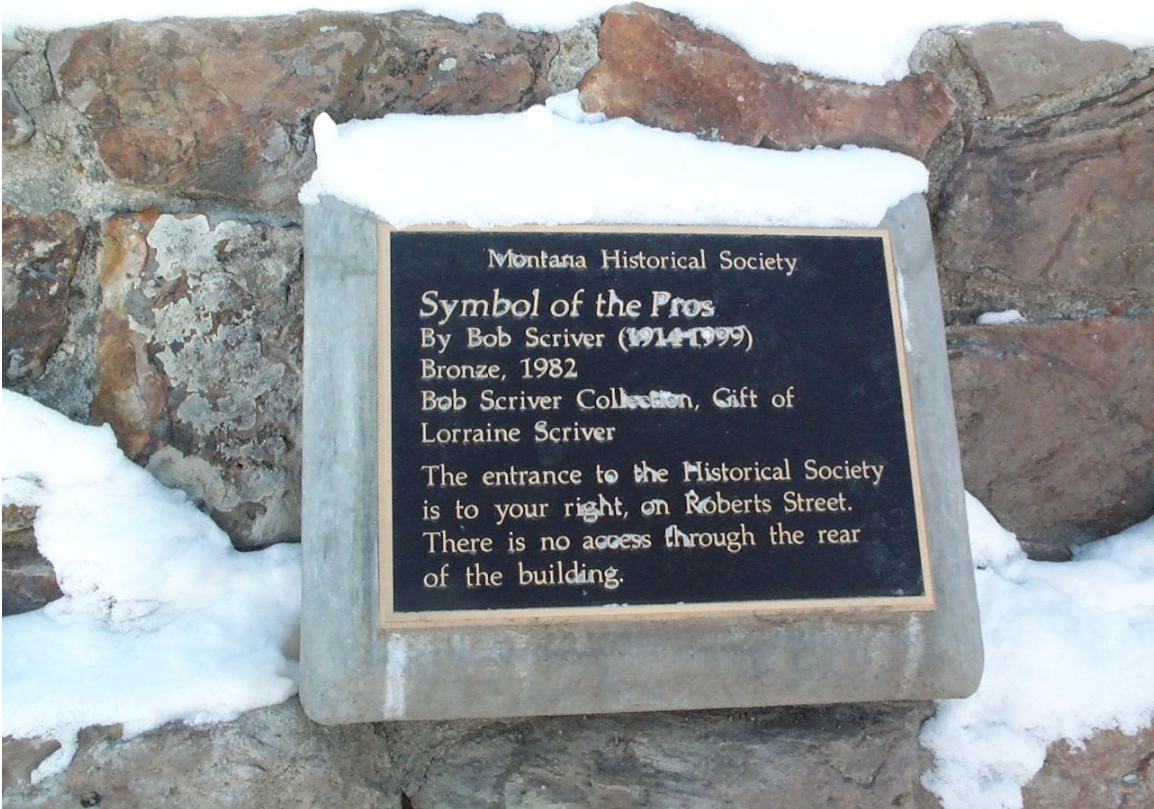
Project: 2' high granite monument located south of the main west entrance to the Historical Society Building. Installed in 1992.



11.

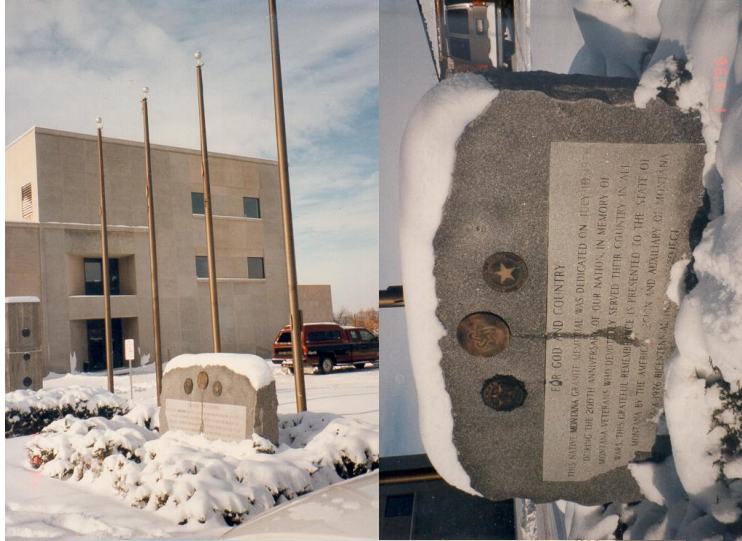
“Symbol of the Pros” – Rodeo Cowboy Statue: 24’ bronze professional rodeo cowboy statue with a 16” x 16” dedication plaque embedded in a stone retaining wall. Located at the northeast corner of the Historical Society Building. Browning sculptor Bob Scriver (1914–1999) was known for his lifelong bronze depictions of rodeo cowboys, traditional Blackfeet subjects, and Montana wildlife. He completed this piece as a proposal for acquisition by the Professional Cowboys Rodeo Association, although that organization never acquired the sculpture. It was cast in New York and exhibited in front of Scriver’s Browning Museum. It was donated to the Montana Historical Society in the spring of 2000, by Lorraine Scriver, the artist’s widow, along with Scriver’s entire collection (over 3,000 pieces) of bronzes, Montana wildlife specimens, and historic artifacts.





12.

200th Anniversary for Montana Veterans: Four flagpoles, a 6' high concrete monument and a 3' high granite marker. Located on the north end of the parking island in the rear parking lot east of the Historical Society Building. Installed by the American Legion and Auxiliary in 1976.



13.

Arrastra: This arrastra—a hand-operated stone mill used for crushing ore in early-day mining operations—came from the Scratch Gravel mining district west of Helena and probably dates to the 1870s. It is made of gneiss (a type of coarse-grained granite), and measures approximately 24” high by 47” wide by 64” long. The Helena Kiwanis Club donated the arrastra to the state in 1937. It was displayed on the south lawn of the capitol before being moved to its present location in 1968.



14.

Eagle: 7' high steel flying eagle sculpture on a steel post. Located outside the north entrance of the Fish, Wildlife and Parks Headquarters Building. Created by Alan Richter. Installed in 1976.



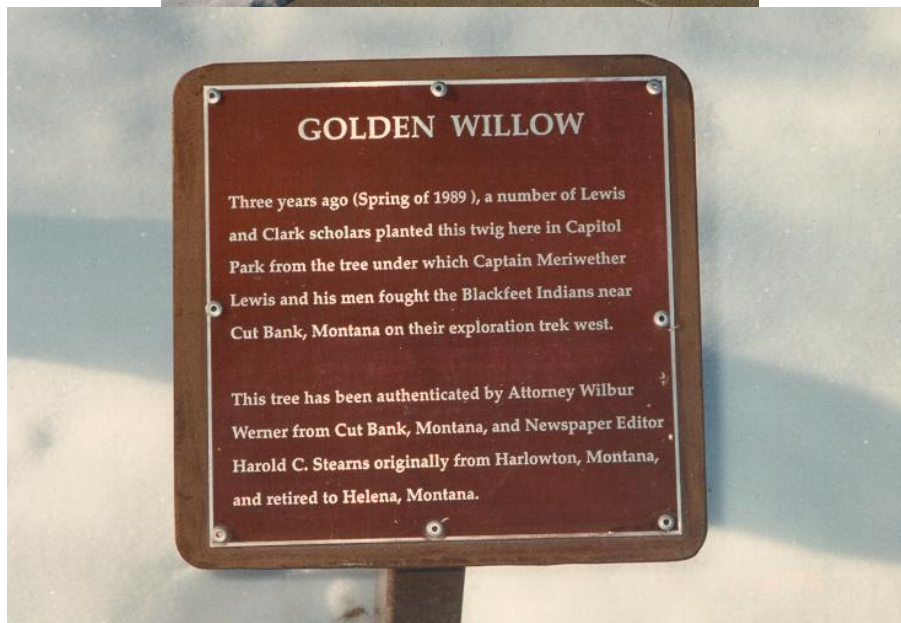
15.

Pearl Harbor Memorial: 3' high granite stone located at the north end of the Capitol Park. Installed in 1995 by the Pearl Harbor Survivors Association, Montana Big Sky Chapter in 1995.



16.

Lewis and Clark Golden Willow: 20' high Cottonwood with a 12" square etched aluminum plaque on a 3' steel post adjacent to the sidewalk in Capitol Park. Planted in 1989.



17.

Peace Pole: The pole is located in the Capitol Park area, below the Executive Residence. The World Peace Prayer Society, founded in 1955 by Masahisa Goi, started the Peace Pole Project in Japan. No historical information of the installation of this specific pole is available.



18.

Montana Centennial Square: A 14' x 16' plaza at the oval near the south entrance to the Capitol Building constructed of 24" x 24" granite pavers at the perimeter and 4" x 8" terra cotta colored, inscribed bricks in the center. Established by the Montana Capitol Restoration Foundation, the square is a fund raising opportunity as blank bricks are replaced with bricks inscribed as directed by donors to the Foundation. Dedicated in July of 2002.



19.

Governor Nutter plaque: Donald Nutter Memorial Plaque: 26.25” high x 45.0” wide x 12.5” deep (base) x 2.0” deep (top) granite monument with attached bronze plaque memorializing Governor Donald G. Nutter and Dennis B. Gordon Exec. Secy. to the Governor, Edward C. Wren Commissioner of Agriculture, Maj. Clifford Hanson, Capt. Joseph Devine, M Sgt. Charles W. Ballard - Members of Montana Air National Guard who died in an airplane crash January 25, 1962 Wolf Creek Canyon while in service of Montana. The monument is flanked by two granite benches, 20.5” high x 56.0” long x 16.25” deep, positioned on the south side of the Capitol building. This plaque was originally installed inside the Capitol building outside the Governor’s office and was removed at some point. It was installed in its present location and rededicated September 14, 2006.

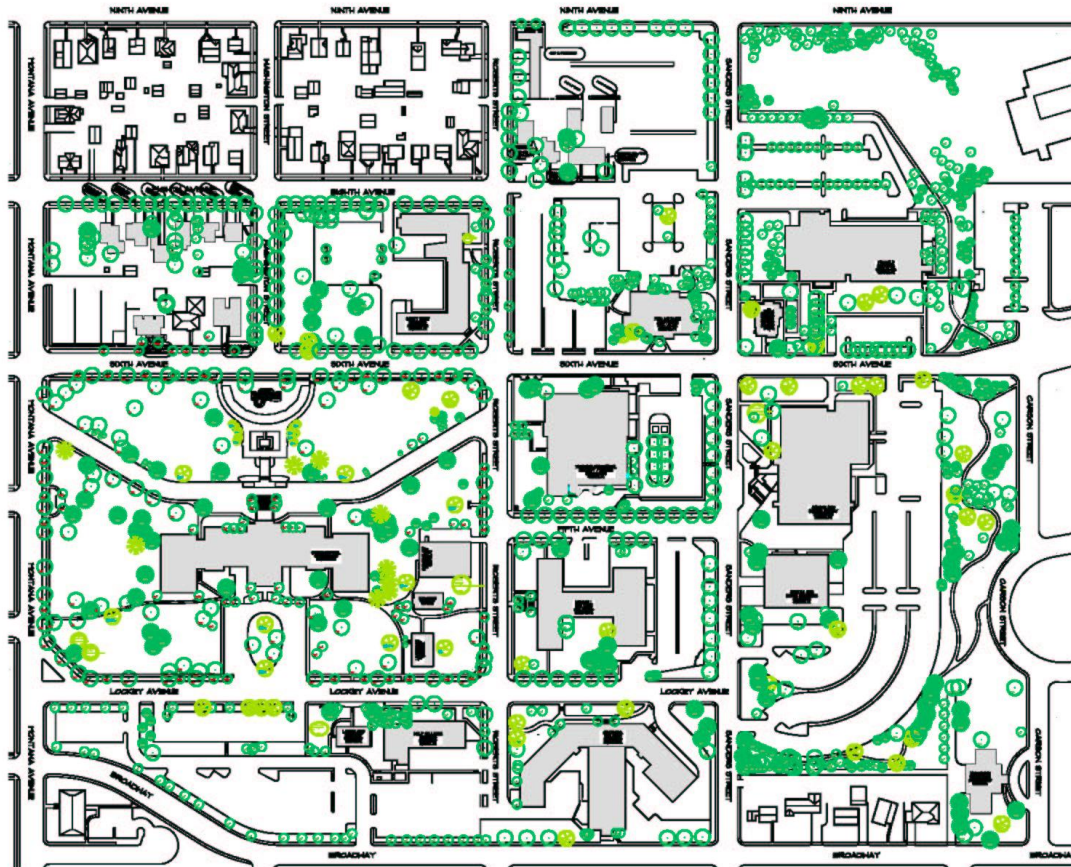


20.

Original Headquarters, Highway Patrol Plaque: 24.0” wide x 20.125” long metal plaque attached to the west side of the Capitol Annex building. The plaque bears the text: “Original Headquarters / Montana Highway Patrol / The Montana Highway Patrol was created by an act / of the state legislature and signed into law by / Governor Frank Cooney on 14 March, 1935. This / building served as the original headquarters from / 1935 until the early 1950s. / Governor Frank Cooney / Supervisor Lou Boedecker / State Highway Commission Members: / L. J. Croonenberg / Harry McGregor / Rockwood Brown / This marker provided by Colonel Paul K. Grimstad and employees of the / Montana Highway Patrol.”



Appendix A: Capitol Tree Dedication Program



DEDICATION	DEDICATOR	YEAR	TREE
Arbor Day	DNRC/National Tree Trust		2003 Pinus Ponderosa
Living Archive	Champion Tree Project		2003 Red Ash
	Vikki Nelson		May-02 Quercus macrocarpa
Scott Spano	DEQ Hard Rock Bureau - Ann Prunuske		May-02 Quercus macrocarpa
Victims of September 11	Helena Class of 2002		2001 Picea pungens 'glauca'
Dick Mayer FASLA	Friends at FWP		Jul-02 Quercus macrocarpa
A Gift to the People of Montana	Helena Garden Club	April 2002 (Arbor Day)	Fraxinus pennsylvanica 'Patmore'
Gary Rose	Friends from the Cogswell		Jul-02 Green Ash
Lives Lost to Violence	Helena Peace Seekers		2001 Bur Oak
Helsingborg	Sweden Exchange - Friendship Force of Helena		Fraxinus pennsylvanica
Beth Furbush	Helena League of Women Voters		2001 Tilia cordata 'Greenspire'
50 Year Class Reunion	1951 Helena and Cathedral High Classes		2001 Picea pungens 'glauca'
Maryann Winslow	Montana Race for the Cure		Jul-00 Malus ioensis 'Klem's Improved'
Janet K. Dye	Friends at Dept. of Justice		2001 Bur Oak

James D. Reichel	1947-1997	1998 Little Leaf Linden
Larry Thompson	Donation	Aesculus hippocastanum
Laura Nicholson	MT League of Women Voters	Oct 10/'12 Jan 24/'96 Little Leaf Linden
Jen Riley Anderson	MT League of Women Voters	Jan 10/'25 Apr 27/'96 Little Leaf Linden
Robert Eide	Dpt. Corrections & Human Services	Aug. 1992 Cut Leaf Birch
Dedication	Donation	Golden Willow
Robert John Weiss	Helena Area Parks Supervisor	Fall Gold Black Ash
Sheila A. Cates	MT State Library Staff	1993 Green Ash
The Nature Conservancy	Montana Centennial Project	Tatarian Honeysuckle
Sen. Dennis G. Nathe	Family & Friends	Dec. 12/'38 Feb. 21/'93 Green Ash
The Nature Conservancy	Montana Centennial Project	Acer platanoides 'Columnare'
The Nature Conservancy	Montana Centennial Project	Dwarf Winged Euonymus
Dedication	Donation	Deciduous
The Nature Conservancy	Montana Centennial Project	Alpine Currant
The Nature Conservancy	Montana Centennial Project	Cockspur Hawthorn
The Nature Conservancy	Montana Centennial Project	Norway Maple
Elsie Jones	Governor & Mrs. Stephens	Apr-90 American Mtn. Ash
Dedication	Donation	Deciduous
The Nature Conservancy	Montana Centennial Project	Redtwig Dogwood
The Nature Conservancy	Montana Centennial Project	Russian Olive
The Nature Conservancy	Montana Centennial Project	Box Elder
Donald E. Pizzini	Donation	Mar. 7/'38 July 7/'94 Green Ash
Lloyd Lindstrom	Family & Friends	July 5/'23 Aug 3/'92 Norway Maple
Jim Bridges	Family & Friends	June 2/'21 Feb 17/'93 Norway Maple
Donald R. Tarleton	Lynne's Freinds	June 21/'39 May 24/'96 European Mountain Ash
Soroptimist Intl.	Helena Heritage	May 12 1992 Siberian Larch
60th Anniversary	Montana Garden Club	June 3 1997 Spring Snow Crabapple
The Nature Conservancy	Montana Centennial Project	Ponderosa Pine
The Nature Conservancy	Montana Centennial Project	Norway Spruce
The Nature Conservancy	Montana Centennial Project	Western Larch
The Nature Conservancy	Montana Centennial Project	Bristlecone Pine
Bristol England Friendship Force	Helena Friendship Force	Jun-98 Canada Red Chokecherry
The Nature Conservancy	Montana Centennial Project	Common Lilac
The Nature Conservancy	Montana Centennial Project	Common Lilac
The Nature Conservancy	Montana Centennial Project	Common Lilac
The Nature Conservancy	Montana Centennial Project	Common Lilac
The Nature Conservancy	Montana Centennial Project	Common Lilac
The Nature Conservancy	Montana Centennial Project	Common Lilac
The Nature Conservancy	Montana Centennial Project	Common Lilac
The Nature Conservancy	Montana Centennial Project	Siberian Peashrub
The Nature Conservancy	Montana Centennial Project	Sugar Maple
The Nature Conservancy	Montana Centennial Project	Common Lilac
The Nature Conservancy	Montana Centennial Project	Common Lilac
The Nature Conservancy	Montana Centennial Project	Common Lilac
The Nature Conservancy	Montana Centennial Project	Common Lilac

The Nature Conservancy	Montana Centennial Project	Common Lilac
Nature Conservancy	Montana Centennial Proj.	Capitol Linden
Dick Knox of Winifred	Donation	1934-1997 Colorado Blue Spruce
Montana Centennial	President Bush	1889-1989 Elm
Nature Conservancy	Montana Centennial Proj.	American Elm
John Ortwein	MT Association of Churches	American Linden
Beloved Homestate	Kyrsten Bergen	Arbor Day 1990 American Linden
Alice V. Laird	Helena Garden Club	Dec. 10/'05 May 15/'93 Redmond Linden
James H. Anderson	Mary Anderson Dundas & Walter Anderson	May-92 Redmond Linden
Alice V. Laird	Helena Garden Club	1994 Linden
Arbor Day	Growing Friends & Norwest Bank	1994 Bur Oak
Dorothy Mead	NA	1994 Norway Maple
Victims of Crime in Montana	Mt. Board of Crime Control	1994 Japanese Tree Lilac
Sen. Dennis G. Nathe	Family & Friends	1994 Fraxinus Pennsylvanica
Mable E. Redfield	Helena Garden Club	1999 Picea pungens 'glauca'